



the andersen company

# SuperScrape Eco

indoor/outdoor

## FEATURES AND BENEFITS

- High recycled content: 95% post consumer recycled tires. Recycled symbol is molded in the corner of the mat.
- Multi-directional molded surface pattern effectively scrapes tough dirt and grime off shoes and provides an excellent anti-slip surface.
- Heavy weight helps keep mat in place even with cart traffic.
- Mat is equally effective when placed vertically or horizontally.
- Recommended for use outside of entrances and inside applications where slip resistance is required.
- Available in Black.



**100%**  
customer satisfaction  
GUARANTEED





the andersen company

# SuperScrape Eco

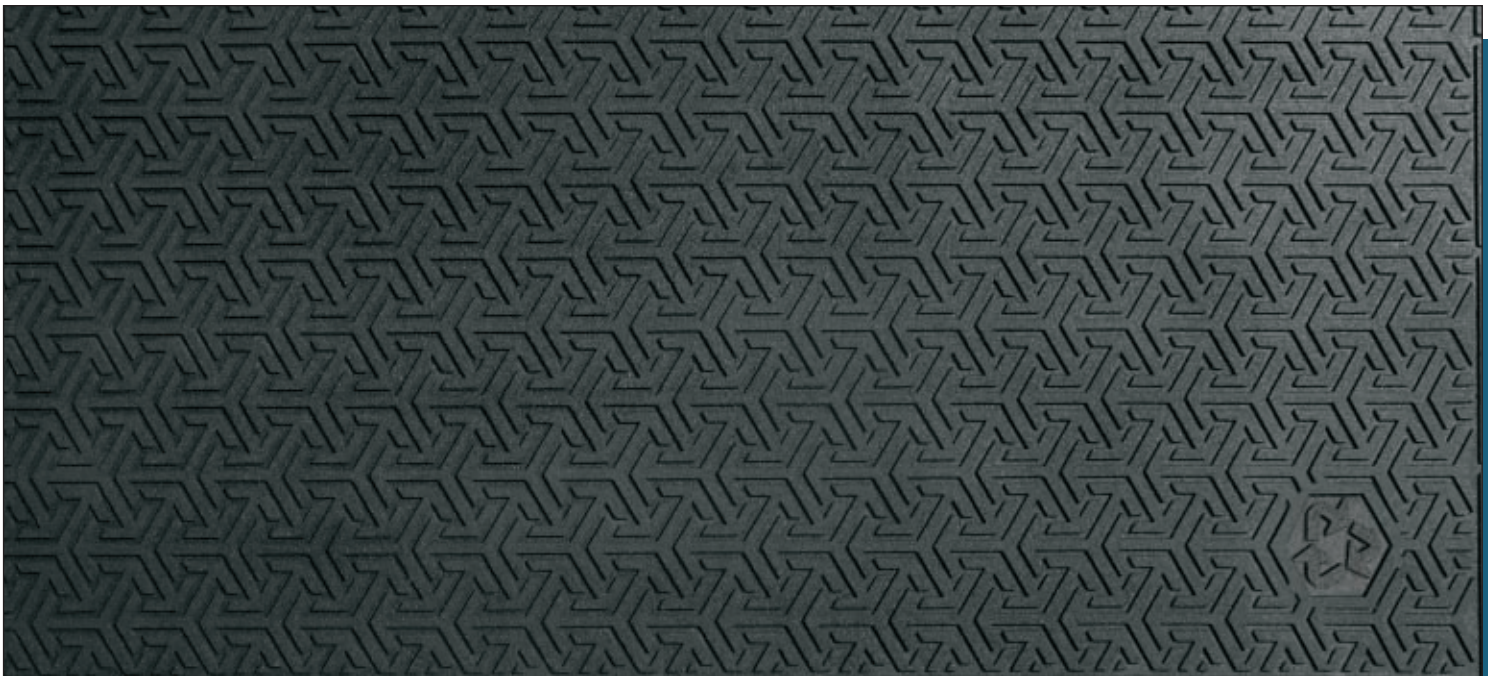
[www.andersenco.com](http://www.andersenco.com)

## Super Scrape Eco

## Product No. 554

SIZE	Size Approx. in.	QUANTITY/PRICE			Shipping Wt. (lbs.)
		1 - 6	7 - 30	31+	
3' X 5'	34.5" x 57.5"	50.08	47.56	46.08	23

Color: Black



Mat Recycling Program